

( ) = ( ) . - 2015. - 2 (85). - . 86-94

**PROJECT EXPERT -**

-

• „ • •

Project Expert

-

-  
Project

Expert

•

,

•

: Project Expert,

,

,

,

-

•

Project Expert

Project Expert, Audit Expert,  
1 : , STATISTICA . .

Project Expert

«

-

»

-

3,5].

Project

[1-

Expert

( )

Project

Expert

(  
, Cash-Flow)

Project Expert

Project Expert

( )

« »  
« »  
« »

Project Expert

« »

# Project Expert



1- . Project Expert

1- Project Expert

9

«

»

, Project Expert

ProjectExpert -

« »

Project Expert -

.Project Expert

Project Expert

« ».

. 6 (2-  
).



2-

100

2

4

(3- )



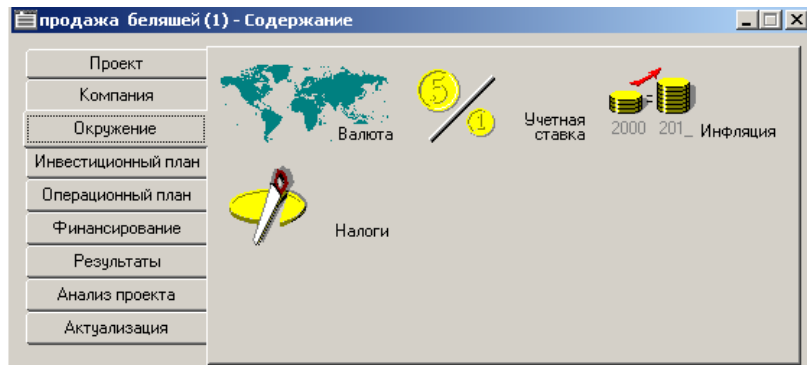
3-

FIFO

LIFO

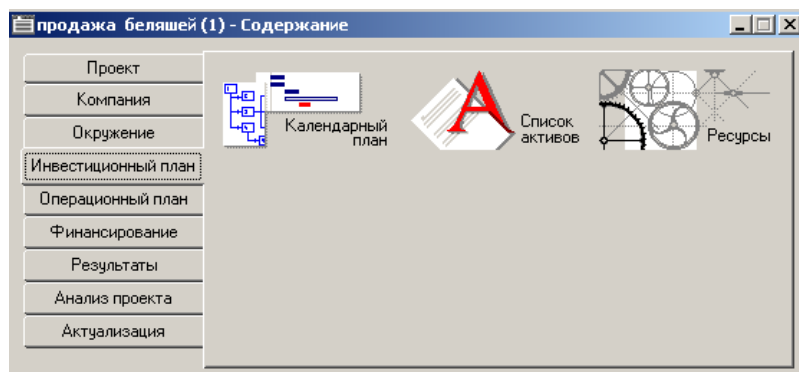
4

(4- ).



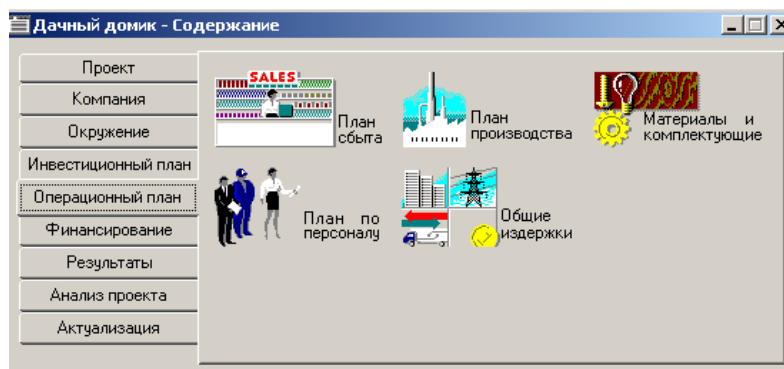
4-

(5- ).



5-

(6 ).



6-



7-

9

(7-

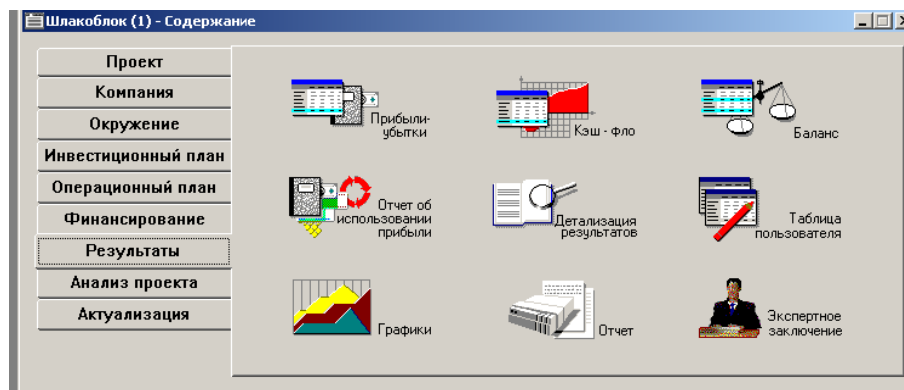
).



8-

9

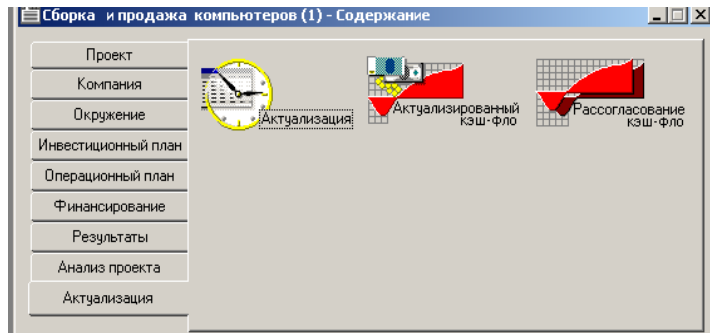
(



8-



(10). 3



10-

Project

Expert

« »

[3,5-7].

Project Expert

...

1. Project Expert. , 2007, 272 ;
2. Library-E-Literature, 2006;
3. , 2007, 448 ;
4. , 2003 , 928 ;
5. : 64
6. Wurthmann, K (Wurthmann, Kurt). Business students attitudes toward innovation and intentions to start their own businesses. INTERNATIONAL ENTREPRENEURSHIP AND MANAGEMENT JOURNAL, Volume: 10 Issue: 4 Pages: 691-711, 2014
7. "Project Expert" , 2003, 10 ;

Project Expert. Project Ex  
 pert

Project Expert.

### Summary

Knowledge of all the possible factors that have significant power to influence the final result and the calculation of their estimates is very important for the sustainable development of business projects.

At this time is used a system of Project Expert. for this purpose. In this is used paper we consider the possibility of using the system of Project Expert for simulation business enterprise. The style of presentation materials have allowed in the capacious form described the system of Project Expert.