

() = () . – 2015. - 2 (85). – .79-85

-

• ” • ”

,

.

« »

.

,

,

,

,

« »

,

,

,

.

:

,

,

,

-

-

.

.

-

,

,

,

-

.

.

,

,

,

,

[1].

..

[2].

[4, 5.]

[3].

[6].

« »

. 2

1 -

305 ,	6627±119	6488±216	6537±198
, %	3,60±0,01	3,64±0,04	3,62±0,002
, %	3,10±0,02	3,19±0,04	3,15±0,001
,	264,2±8,1	281,7±8,5	274,0±11
,	226,3±7,1	257,0±6,1	243,6±8,0

1

« »

2

305

6537

3,19%,

3,15%,

3,10%.

3,62%,

3,64%,

3,60%

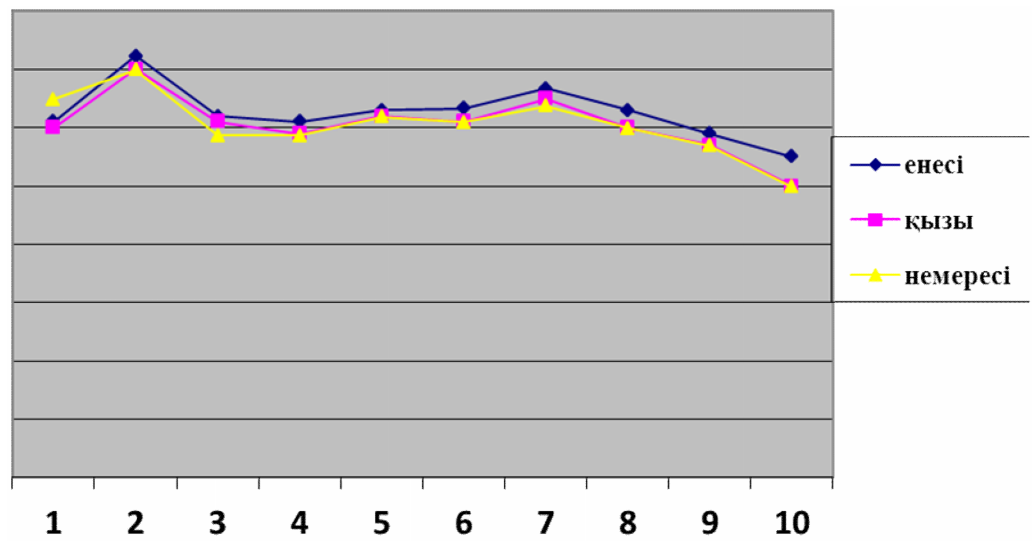
2

305

«

»

3 - 6



1

3 - 6

- ,)
 « »
 1
 (,)
 ()
 2
 (2).

	2 - , %								
	% ,	- , %	pH	- , /	- , %	- , %	- , %	- , %	
1	3,78	3,28	6,61	838	2,27	0,07	4,84	0,01	21.06
2	3,90	3,28	6,52	309	2,46	0,18	4,83	0,21	12.08
3	3,74	3,36	6,63	101	3,14	0,17	4,86	0,15	22.09
4	3,57	3,33	6,61	72	2,49	0,11	4,50	0,05	03.10

100000

1 - 10000

, 1³ - 250

500000

1 - 2

Combi-FossFT +
700 (, ,
24 ,
...)

« »

(3

).
3

(-

), $X \pm mx$

		pH	-				
%	%		-	%	%	%	%
			/				
3,70±0,01	3,15±0,02	6,6±0,06	508,32±21,3	2,74±0,03	0,16±0,01	4,47±0,04	0,14±0,02

[7,8,9].

[10]

75 - 80%,

80 - 90%

(

).

()

« »

«

»

2

305

6537

3,19%,

3,15%,

3,10%.

3,62%,

3,64%,

3,60%

3 - 6

1 2008-2009 . . . -
1, 2012.
2 ,
28 2012. - 32 (26851)
3
, 2002, 128
4 - 20
. 7. 2011. .15-17.
5
. - 6. 2011. .19-23.
6 . « »
. « - 5 »
- 2009. .
22.
7 -
. , - 1999. .18-19.
8
. 2007. .111-115.
9 -
. 2006.- 2 (41). 34-41.
10
.- ∴ , 2004.120 .

305

(3,15%, 3,3%).
()
).

Summary

Milk yield for 305 days of lactation and milk content Holstein cows of generations are defined. Results of research showed that Holsteins already in the first lactation give high milk yield. First heifers of generation have fat content of milk slightly lower due to the beginning of lactation. The protein milk quality is unfortunately less than the breed standard (3.15%, 3.3% is needed). We consider that it is due to the insufficient number of protein in the diet (legumes forage crops are not cultivated at farm).

The chemical and quality content of milk of Holstein cows of black and motley breed are determined and the possibility of reducing of the amount of somatic cells is showed.